



Question
the existing /
*Imagine the
impossible /*
Create the
enduring

At a Glance





WSP

02
—
03



Future Questions

Can we help societies thrive
in a world we do not control?

Can we anticipate the unforeseeable,
perceive the unexplainable,
and plan something unbelievable?

Can we design the unthinkable?

Can we think international
and still act local?

Nurture sustainable societies,
connect communities,
and seize opportunities?

Can we trace horizons,
hold true to our ambitions,
and hold ourselves accountable?

Can we design a place, where our friends,
families and neighbours, can thrive?

What if we can?

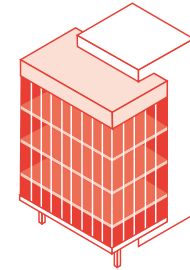
WSP

International Agility



± 37,000

EMPLOYEES



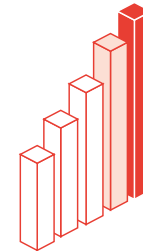
500

OFFICES



40

COUNTRIES



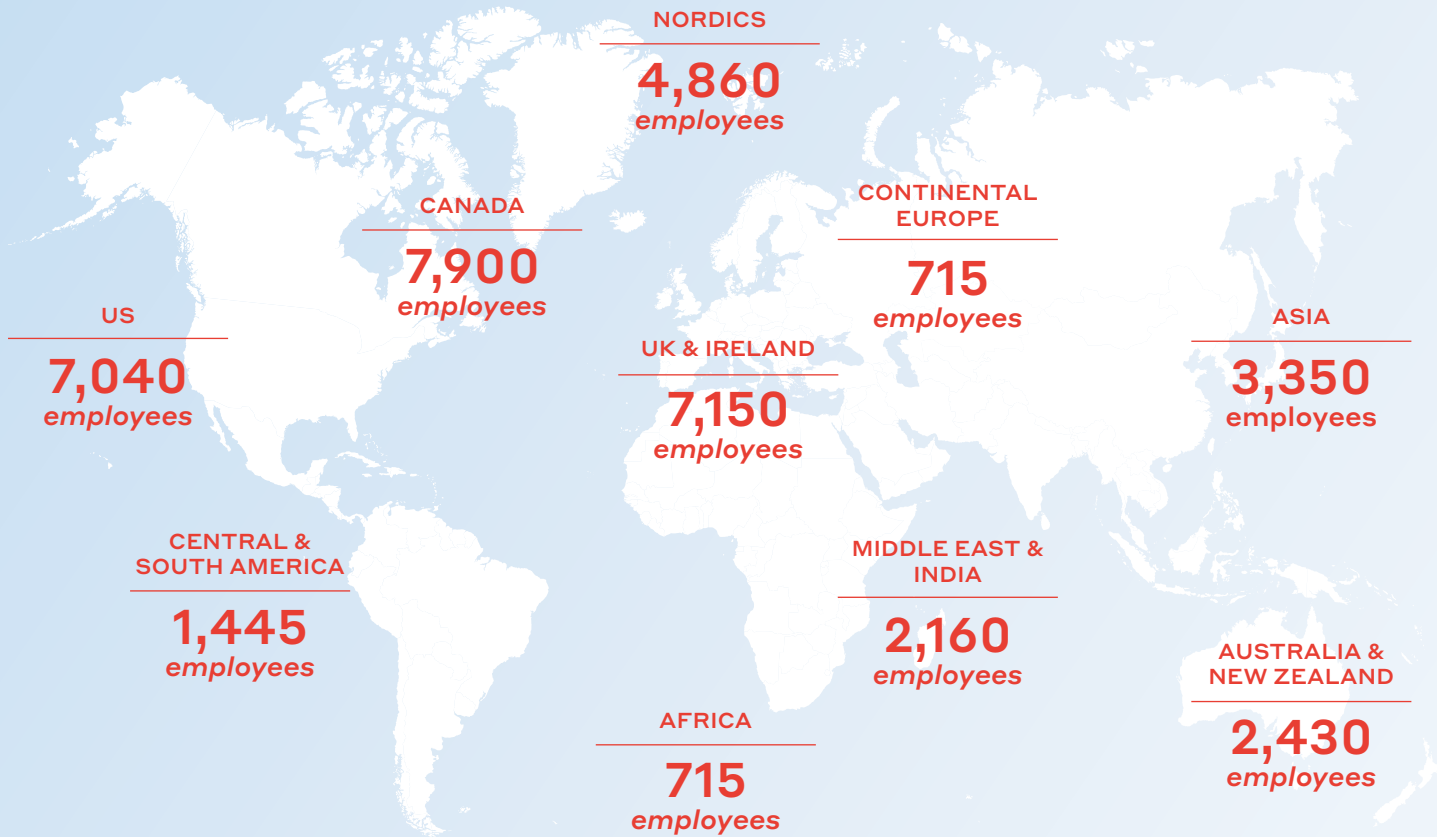
6.4B

2016 REVENUES (CAD)

04

05


As one of the world's leading engineering professional services consulting firms, we are dedicated to our local communities and propelled by international brainpower. We are technical experts and strategic advisors including engineers, technicians, scientists, architects, planners, surveyors and environmental specialists, as well as other design, program and construction management professionals. We design lasting solutions in the Property & Buildings, Transportation & Infrastructure, Environment, Industry, Resources (including Mining and Oil & Gas) and Power & Energy sectors as well as project delivery and strategic consulting services.



Figures at June 30, 2017 except for countries where employees from POCH have been added July 30, 2017

OUR BELIEF

**For societies
to thrive,
we believe that
we must all
hold ourselves
accountable for
TOMORROW.**

An aerial view of a city skyline, likely Dubai, with several prominent skyscrapers. The Burj Khalifa is the tallest building in the center. The foreground and middle ground are partially obscured by a thick layer of white fog or low clouds. The sky is a pale, hazy blue. The overall mood is serene and futuristic.

OUR PURPOSE

We exist to
FUTURE PROOF
our cities and
environments.

Our Guiding Principles



08

09

We value our people and our reputation.

We make extraordinary efforts to attract, develop, engage and retain the best professionals in our fields of expertise because this is what makes us great. We put the highest ethical standards at the centre of all we do. Professionalism is inherent in our offering. We are humble and act with moral and intellectual integrity, keep our word, treat everyone with respect, support our colleagues, and embrace diversity. We care about individuals and their progress and offer the most fulfilling career development for our professionals. We promote our young recruits because we believe fresh perspectives bring great ideas and new energy.

We are locally dedicated with international scale.

Our strength is our ability to adapt to our client culture and local markets. We provide our clients with the same personalized services as a specialist firm while at the same time leveraging our worldwide expertise to undertake the most complex projects and assist our clients to realize their ambitions. We achieve this by remaining agile, with a common-sense approach, and by keeping our structure and business model simple and lean. Our focus on growth also allows us to better serve our clients by expanding our offering, expertise and geographical reach.

We are future-focused and challenge the status quo.

We anticipate trends in order to propose innovative ideas for our clients to meet their business objectives. We ask questions, look at complex problems from different angles and find solutions that break paradigms. We are problem-solvers who evolve, improve, modernize and excel. We know our solutions will shape the communities of tomorrow and help societies thrive sustainably. We embrace change and have an uncompromising determination to achieve excellence.

We foster collaboration in everything we do.

Our international agility is founded on our collaborative working environment. Our devotion to teamwork creates unique international networks of outstanding professionals who understand that great achievements come from collaboration. We embrace and support a high-performing culture, always strive to learn from others, and foster a stimulating work environment. We put the interest of our team ahead of our own and joining us is the best way to fully understand the collegiality that defines our firm.

We have an empowering culture and hold ourselves accountable.

We are empowered to turn challenges into opportunities while being held accountable to standards beyond the norm. Our proactive leadership empowers us to be client-focused, agile and responsive, while at the same time being accountable to our clients, our peers and our shareholders. The profitability of our firm is essential to our future and this is why we manage our business responsibly as if it were our own.

World Class Talent

10 **Inspired by diversity, driven by**
11 **inclusion, we work with passion**
and purpose. We are:

Passionate people doing purposeful and sustainable work that helps shape our communities and the future.

A collaborative team that thrives on challenge and unconventional thinking.

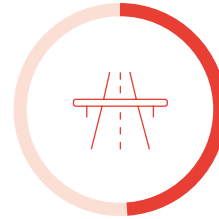
A network of experts channelling our curiosity into creating solutions to complex issues.





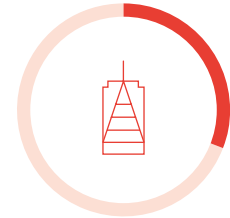
Proactive Leadership

2016 Net Revenues by Market Segment



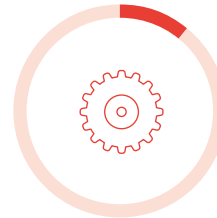
49%

**TRANSPORTATION &
INFRASTRUCTURE**



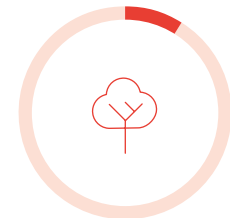
31%

**PROPERTY &
BUILDINGS**



11%

**INDUSTRY &
ENERGY**



9%

ENVIRONMENT

Driven by possibilities, purpose and pride, our enduring commitment to the betterment of society and our understanding of the stakes fuels our work. We are dedicated to our local communities, but also propelled by international brainpower. Complexity, proactivity and accountability inspire us. By helping our clients design lasting solutions for the advancement of our built and natural environments, we are building a powerful legacy.



Enduring Projects Born Of Complexity

14

15

We want to play a key role in delivering a sustainable and resilient world. Through our project delivery, our approach lies in our commitment to provide forward-thinking advice and unparalleled expertise locally to help our clients thrive in a changing world. We are actively seeking out the most transformative, innovative solutions to pioneer a more sustainable future.

01 —



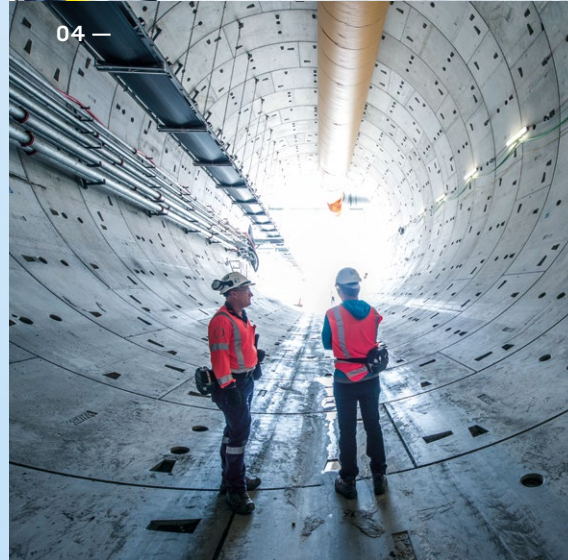
02 —



03 —



04 —



01 —
22 Bishopsgate
London, UK

02 —
Saint-Philemon Wind Farm
Quebec, Canada

03 —
Second Avenue Subway
New York, US

04 —
Waterview Connection
Auckland, New Zealand

© Jeff Smith Photography,
courtesy of Well-Connected Alliance



Can we trace horizons,
hold true to our ambitions,
*and hold ourselves
accountable?*

What if we can?



WSP Global Inc.
1600, René-Lévesque Blvd. W.
16th Floor
Montreal, Quebec
H3H 1P9

wsp.com

© 2017 WSP Global Inc. All rights reserved.

The contents of this publication may not be reproduced
by any means in whole or in part, without prior written
consent from the publisher.

GL-CC-AAG-BR-001-EN-201708